

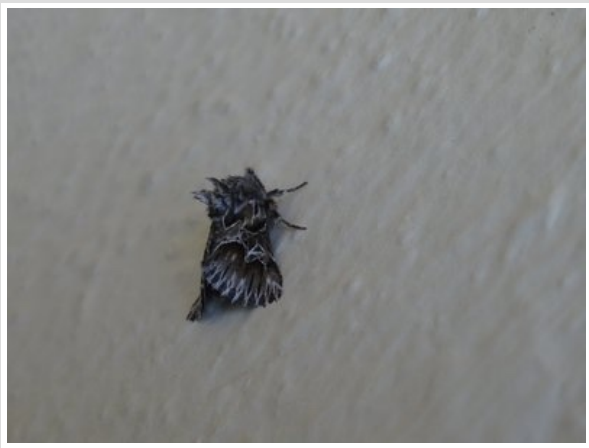
## Re: Matsukaze

by Matsukaze, 06-Mar-17 09:36 PM GMT

16 species of butterfly in a couple of days last week in Malaga province, southern Spain, not all yet identified and some never will be – Geranium Bronze, Holly Blue, Large White, Small White, Brimstone/Cleopatra (female flying by at speed), Speckled Wood, Small Copper, Wall (in good numbers), Black-eyed Blue (single male patrolling a thorny bank with considerable vigour and persistence), Clouded Yellow, Scarce Swallowtail *feisthameli*, Green-striped White, Dappled(?) White (impersonating the previous species), unidentifiable small blue, Spanish Festoon (unexpected fly-by whilst we were having coffee in a garden centre...), Red Admiral. Photos to follow.

## Re: Matsukaze

by Matsukaze, 06-Mar-17 09:44 PM GMT



*Moth with punk tendencies – can anyone provide an ID?*



*Male Black-eyed Blue*



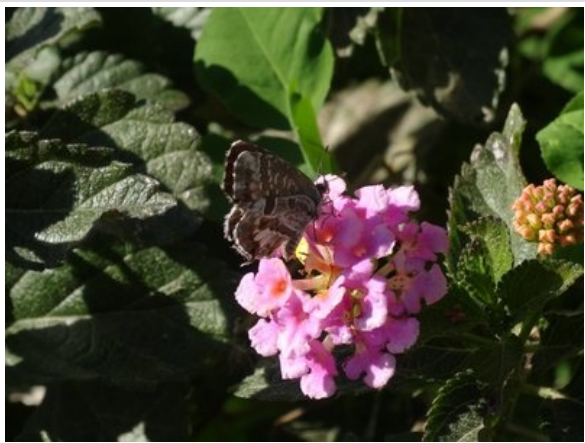
*Green-striped White*



*Dappled White* – presumably *crameri*, not *tages*



*feisthameli*



*El Bronzo*

### Re: Matsukaze

by Wurzel, 07-Mar-17 08:17 PM GMT

Interesting to see the Black-eyed Blue, that's not a species often mentioned 🤔🌍

Have a goodun

Wurzel

### Re: Matsukaze

by David M, 08-Mar-17 12:27 AM GMT

Great to see the Black-eyed Blues, Matsukaze. A lovely species that I have only encountered once, in the Var in mid-April 2015.

**Re: Matsukaze**

by Chris Jackson, 08-Mar-17 08:00 AM GMT

The Western Dappled White (*E. crameri*) looks good to me, with the angled hindwing costa.  
Chris

**Re: Matsukaze**

by Mikhail, 08-Mar-17 08:10 AM GMT

The pretty little moth appears to be *Amephana aurita*.

M.

**Re: Matsukaze**

by Padfield, 08-Mar-17 07:25 PM GMT

Are we going to see that unidentifiable little blue? 😊

Guy

**Re: Matsukaze**

by David M, 08-Mar-17 08:27 PM GMT

**Padfield wrote:**

Are we going to see that unidentifiable little blue?

Attention to detail as ever, Guy!

Yes, can we see the lycaenid in question, Matsukaze?

**Re: Matsukaze**

by Matsukaze, 08-Mar-17 11:38 PM GMT

No photo, so unfortunately not...it was perched behind this stuff, so I did not care to approach in any great hurry, and then it flew:



Male *celina* would be a best guess. It certainly wasn't any of the other blue species I saw.

Thanks to everyone for the ID help!

**Re: Matsukaze**

by Matsukaze, 22-May-17 10:48 PM GMT

Freshly-emerged Lychnis moths. I collected the caterpillars from bladder campion seed-heads last summer and they emerged today. One has already flown...



### Re: Matsukaze

by Wurzel, 22-May-17 10:55 PM GMT

Wonderfully cryptic markings on the moth Matsukaze 😊 Although I think I've been watching too much Mighty Boosh as I can see evil face of the Hitcher 🤪🤪

Have a goodun

Wurzel

### Re: Matsukaze

by David M, 22-May-17 11:10 PM GMT

Fantastic camouflage, Matsukaze. Well done for rearing them to adulthood.

### Re: Matsukaze

by Matsukaze, 23-May-17 09:49 PM GMT

Thanks folks.

A bit of backstory here...there are a few related moths that feed on the seed-heads of various campions. Most use the various species of white campion, that are fast disappearing from Somerset, but this one extends its feeding range to red campion as well. In the summer of 2015 I collected several *Lychnis* caterpillars from the seed-heads of red campion and later, as an afterthought, some less-developed ones from the seed-heads of the only sizeable patch of bladder campion that persists locally (I was trying to see if Netted Pug still survived in the area - check out photos of it to understand why). The small bladder campion larvae pupated shortly after the red campion larvae but then emerged in the autumn, whereas the red campion larvae overwintered. At this point I thought I was on to something interesting - are the seeds of the white campions more nutritious, and is this why the *Lychnis* larvae that fed on them grew up faster and got in an extra generation, and why the other seed-head feeders are restricted to the white campions?

2016 didn't really bear this out, unfortunately, as there was no second generation at all - perhaps the earlier spring had something to do with that. After I had collected the first larva from the wild and it had eaten through the food in its seed-heads, I made the mistake of collecting a bunch more bladder campion seed pods from my garden to give it food to continue to grow. Another 11 caterpillars were inside...I ended up having to buy in seed to feed the caterpillars. I am glad they have started to emerge.

My garden is now full of assorted Caryophyllaceae, significant amounts unidentified and of alien origin. It will be interesting to see what the moths choose to lay their eggs on this summer...





*Lychnis larva in the wild, approaching full size, on seed-pod of red campion*



*feeding up*



*Emergency accommodation!*

**Re: Matsukaze**

by Matsukaze, 01-Jun-17 09:33 PM GMT

A remarkably beautiful dragonfly - immature male Black-tailed Skimmer, this evening.



### Re: Matsukaze

by Wurzel, 01-Jun-17 09:51 PM GMT

A great find Matsukaze, a species I've yet to encounter 🍄😄

Have a goodun

Wurzel

### Re: Matsukaze

by Matsukaze, 12-Jun-17 09:58 PM GMT

Some days you just get lucky. Freshly-emerged Hornet Moth just outside work in Bath today. I've known they were here since 2009, as they make distinctive emergence holes at the base of poplar trees, but this is the first time I've ever seen the adult.





**Re: Matsukaze**

by David M, 13-Jun-17 11:19 PM GMT

What a beautiful insect, Matsukaze. Many thanks for sharing.

**Re: Matsukaze**

by Matsukaze, 14-Jun-17 08:49 PM GMT

A nice find...



**Re: Matsukaze**

by David M, 14-Jun-17 11:15 PM GMT

Now you're talking! Butterflies and wine combined!

What could possibly be finer! 😊

### Re: Matsukaze

by Matsukaze, 07-Aug-17 09:54 PM GMT

Light Brown Apple Moth, emerged today from larva found on osier, Pilton Green, Gower earlier in the summer.



### Re: Matsukaze

by Matsukaze, 17-Aug-17 07:08 PM GMT

Twenty years ago, the Small Ranunculus moth was considered extinct in this country. Its fortunes have revived considerably – here is the larva feeding in full view by the side of the river in the centre of Bath.



### Re: Matsukaze

by Pauline, 18-Aug-17 07:02 AM GMT

Well spotted! It clearly pays to remain observant at all times – mind you, I wouldn't have known what it was – or recognised the significance.

### Re: Matsukaze

by Matsukaze, 06-Oct-17 10:05 PM GMT

Moths that have emerged recently, reared from larvae.





*Yellow-line Quaker*



*Pink-barred Sallow*



*Sallow Moth*



*Brick Moth*

**Re: Matsukaze**

by Wurzel, 06-Oct-17 10:20 PM GMT

Interesting set of images there Matsukaze – especially the Brick Moth as I think you've helped me make an ID that I've had kicking around for a while, cheers 😊😊

Have a goodun

Wurzel

**Re: Matsukaze**

by Matsukaze, 08-Oct-17 10:33 PM GMT

Moths to light in the woods.



*Common Marbled Carpet*



*Snout – surely the Avro Vulcan of the moth world*



*Large Ranunculus*

**Re: Matsukaze**

by David M, 08-Oct-17 11:24 PM GMT

Some cracking moths there, Matsukaze, especially the Pink Barred Sallow and, of course, the Snout, which does indeed resemble one of the more advanced combat aircraft in the world....perhaps we are learning from nature as we evolve!