

Re: Serhiy Popoff

by serhiy popoff, 14-Jan-14 04:34 AM GMT

I'd like to inform that Alexanor CFSI main page, Ukraine Butterfly Monitoring Scheme, moved to new address, it works and still under construction, please check it time to time directly at <https://sites.google.com/site/alexanorukrainebms/>

Re: Serhiy Popoff

by serhiy popoff, 16-Feb-14 02:54 AM GMT

BMS in the West Ukraine, Bukovcevo monitoring camp, first butterfly seen on wings in 2014 is Camberwell Beauty !

12.Feb.2014 , was +14°C, Sunny Weather 😊



[url=http://piccy.info/:3gytl05d][url:3gytl05d][url=http://i.piccy.info/a3c/2014-02-16-02-52/i9-5928938/113x123-r:3gytl05d][url:3gytl05d]

Re: Serhiy Popoff

by serhiy popoff, 17-Feb-14 04:47 AM GMT

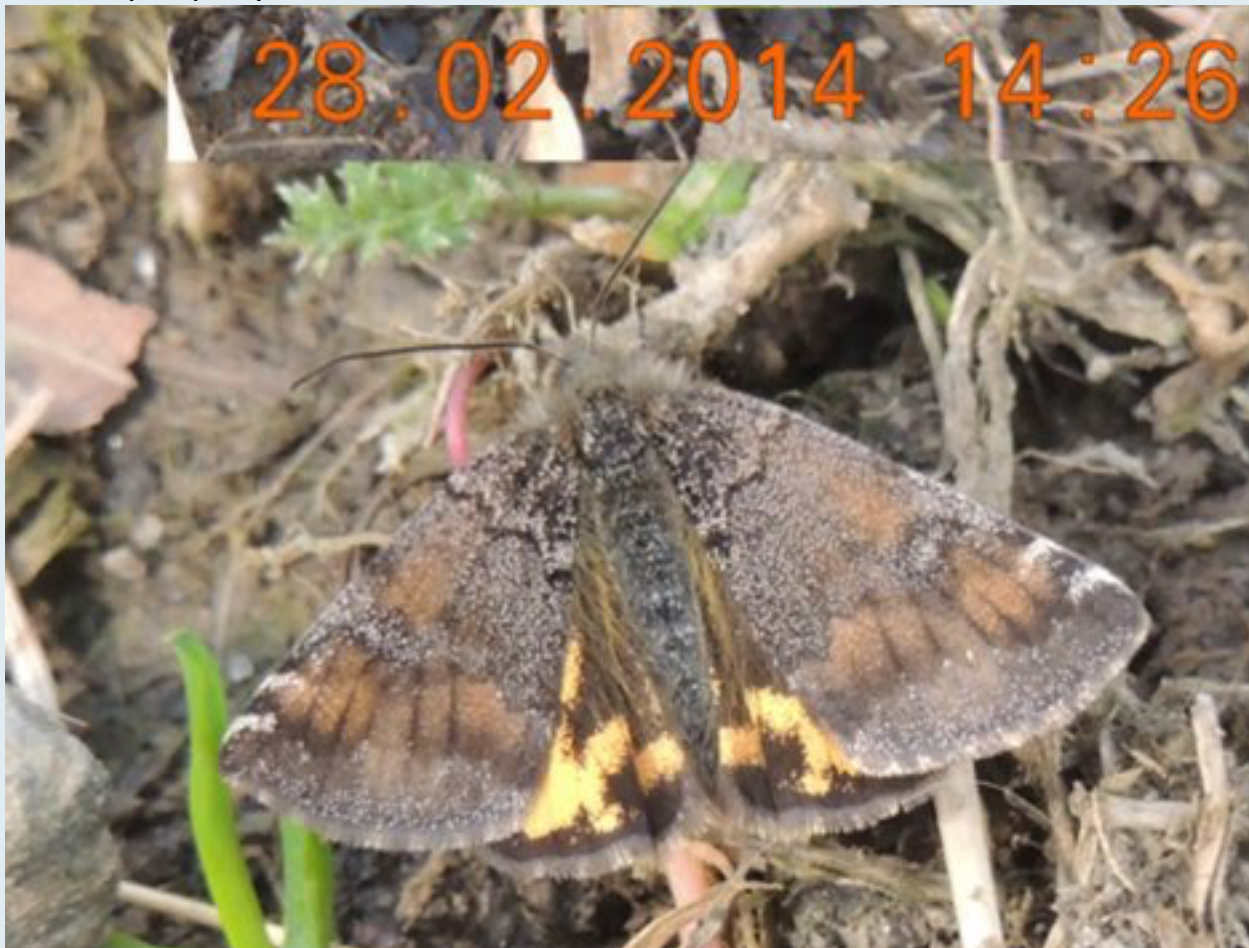
My Tags: C-Europe, South-West Ukraine, Monitoring, Populations, Insecta, Lepidoptera, Papilionoidea, Hesperioidea. The most important butterfly observations are directly at <http://www.inaturalist.org/observations/serhiyopoff>

Re: Serhiy Popoff

by serhiy popoff, 01-Mar-14 05:11 AM GMT

First day activity moth and the Spring start indicator emerged from pupa is *Archiearis parthenias*, 28 February – 10 days in average earlier than always.

[url=http://piccy.info/view3/5997188/b0754b992c99e0349a58b6a34f9946a3/:3q707yi7]



[url:3q707yi7][url=http://i.piccy.info/a3c/2014-03-01-05-07/i9-5997188/469x355-r:3q707yi7][url:3q707yi7]

Re: Serhiy Popoff

by serhiy popoff, 04-Mar-14 03:46 PM GMT

Some data on butterfly numbers in Bukovcevo Butterfly Monitoring Camp for 2013 ready directly at <https://docs.google.com/spreadsheets/ccc...xWUE#gid=0>

Re: Serhiy Popoff

by serhiy popoff, 21-Apr-14 05:54 AM GMT

First butterfly of Painted Lady (*Vanessa cardui*) at our butterfly monitoring camp was recorded, 20-April-2014

[url=http://piccy.info/view3/6269234/7e179527e4768a5466eda0b604eebdf/:heffshnt]



6269234/433x385-r:heffshnt][url:heffshnt]

[url:heffshnt][url=http://i.piccy.info/a3c/2014-04-21-04-14/i9-

Re: Serhiy Popoff

by serhiy popoff, 29-May-14 07:13 AM GMT

Is it *Muschampia tesselum*? Thank you for ID 😊

[http://image-store.slidesharecdn.com/b1 ... edium.jpeg](http://image-store.slidesharecdn.com/b1...edium.jpeg)

Re: Serhiy Popoff

by Padfield, 29-May-14 08:19 AM GMT

No - the spot at the base of s1 on the hindwing rules out *Muschampia*. So it's *Pyrgus*. Do you have any more pictures?

Guy

Re: Serhiy Popoff

by serhiy popoff, 24-Jun-14 02:09 AM GMT

While I walk on Luta-2 butterfly transect in Velyky Berezny district new butterfly species for Transcarpathia fauna monitored

[http://i.piccy.info/i9/fc53abdd4dcbc306 ... 2_14_2.jpg](http://i.piccy.info/i9/fc53abdd4dcbc306...2_14_2.jpg)

[url=http://piccy.info/view3/6596426/e0ceed40cc786355b2c4aafe56f82bf2/:2hmaje0b]



6596426/472x354-r:2hmaje0b][url:2hmaje0b]

[url:2hmaje0b][url=http://i.piccy.info/a3c/2014-06-24-00-53/i9-

It flies together with *Brenthis ino* and *Eumedonia eumedon* on wet tall herb *Geranium palustre* meadow, section No6

[url=http://piccy.info/view3/6596425/7fd25a6a65b285ce444089ac8bcbc022/:2hmaje0b]



[/url:2hmaje0b][url=http://i.piccy.info/a3c/2014-06-24-00-51/i9-

6596425/436x382-r:2hmaje0b][url:2hmaje0b]
[http://i.piccy.info/i9/6850bd972709e624 ... _14_06.jpg](http://i.piccy.info/i9/6850bd972709e624..._14_06.jpg)
Please compare underside using LepiBase Europa, it is!

[url=http://piccy.info/view3/6596424/4cf9a0f761a2f63133fa410a073fe91f/:2hmaje0b]



[/url:2hmaje0b][url=http://i.piccy.info/a3c/2014-06-24-00-

49/i9-6596424/500x146-r:2hmaje0b][url:2hmaje0b]
[http://i.piccy.info/i9/8f8baa936dee92d6 ... _pibase.jpg](http://i.piccy.info/i9/8f8baa936dee92d6..._pibase.jpg)

Re: Serhiy Popoff

by serhiy popoff, 26-Jun-14 10:30 AM GMT

BMS in the West Ukraine. Up to date at 26 June 2014.

New species for Bukovcevo Butterfly Monitoring Camp was found recently.

Lycaena phlaeas, female resting on grass

[url=http://piccy.info/view3/6609338/686362d8e171c0433e24c50755ac0b59/:36vvv7ze]



[/url:36vvv7ze][url=http://i.piccy.info/a3c/2014-06-26-09-20/i9-

6609338/481x347-r:36vvv7ze][url:36vvv7ze]